

Parts Manual

Mfg. No: 5902133
Z3001, Hurricane Series Stand-On Debris
Blower (Z3001, 7500, V35, NA)



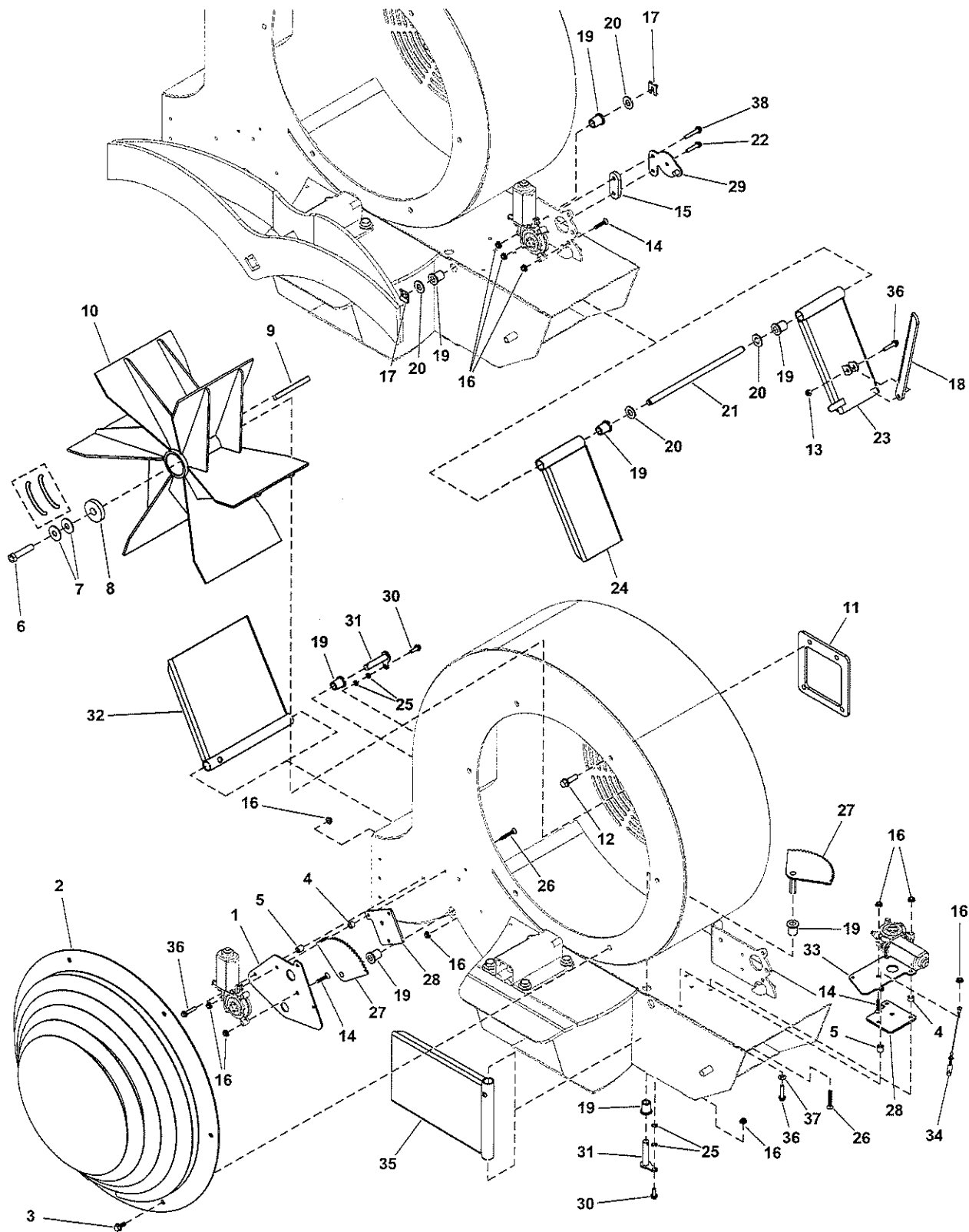
5109061 - Tire, Debris Blower, Pavement Tire 20.5 X 8.0-10.....

Model Components	Page
Blower Group	4
Decal Group - Brand and Model	6
Decal Group - Safety and Operation	8
Electrical Group S/N: 4002219159 and Above	10
Electrical Schematic S/N: 4002219159 and Above	12
Engine Group	14
Fuel Tank and Hose Group	16
Handle Bar Group	18
Hydraulic Group	20
Instrument Control Panel Group	22
Main Frame Group	24
Motion Control Group	26
Parking Brake Group S/N: 4002219159 and above	28
Wheel and Tire Group	30
Torque Specification Chart	32

Blower Group

Note: Unless noted otherwise, use the standard torque specifications

Mfg. No: 5902133



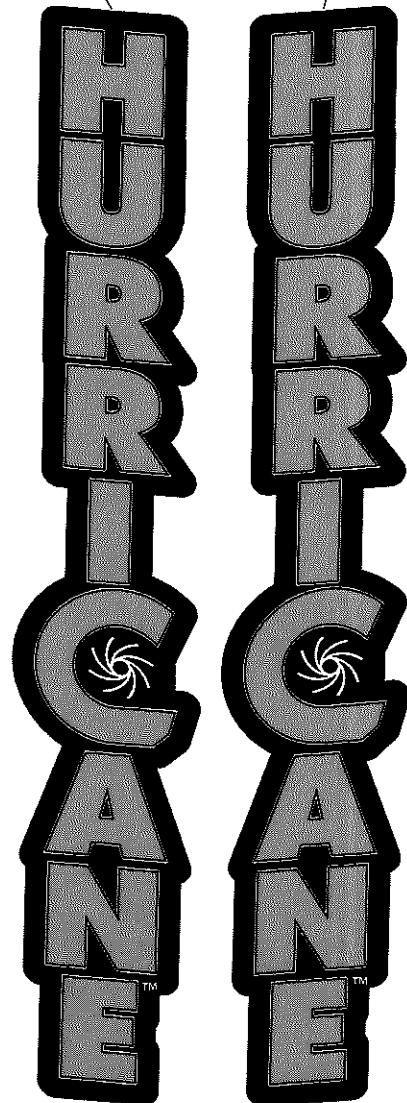
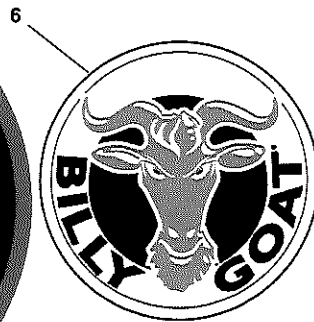
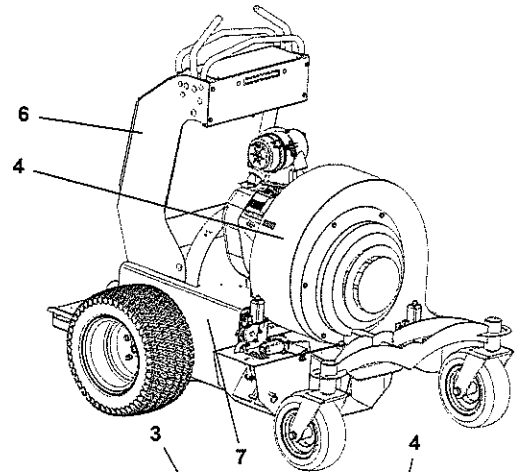
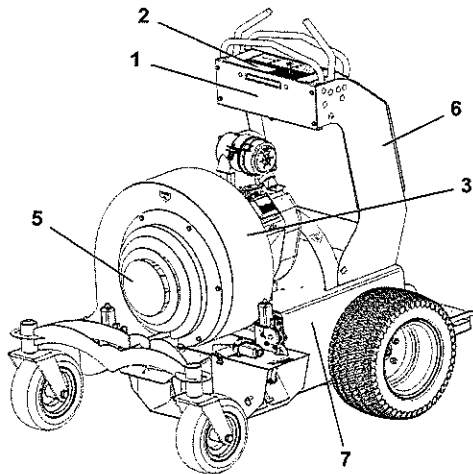
Blower Group

REF NO	PART NO	QTY	DESCRIPTION
1	5107338AFS	1	PLATE
2	5418554AFS	1	COVER
3	703354	6	SCREW, 5/16-18
4	5107396FS	4	SPACER
5	5106902FS	3	SPACER
6	5107308FS	1	BOLT -(Torque impeller mounting bolt to 140 ft-lbs (190 Nm))
7	5108105FS	1	WASHER, BEVELED
8	5107199FS	1	WASHER
9	5106823FS	1	KEY
10	5419590FS	1	IMPELLER
11	5107511FS	1	PLATE, Spacer
12	5025390X8FS	4	BOLT
13	5025095SM	1	NUT, 1/4-20 HEX NYLON
14	5106874FS	4	SCREW
15	5107334AAFS	1	PLATE, Spacer
16	5025126FS	15	NUT
17	5106951FS	2	CLIP
18	5107335FS	1	PLATE
19	5106943FS	8	BUSHING
20	5025158SM	3	WASHER, 1/2" SAE
21	5107281FS	1	ROD, SUPPORT
22	5106873FS	1	BOLT
23	5107483FS	1	DEFLECTOR
24	5107772FS	1	DEFLECTOR
25	5025169FS	4	WASHER
26	5106903FS	4	SCREW
27	5107339AAFS	2	DEFLECTOR
28	5107332AAFS	2	PLATE, SPACER
29	5107333FS	1	KEEPER
30	5106872FS	2	BOLT
31	5107337FS	2	PIN
32	5107496FS	1	DEFLECTOR
33	5107329AFS	1	PLATE -(Plate only, motor shown for reference only.)
34	5107886FS	1	PIN
35	5107468FS	1	DEFLECTOR
36	5106919FS	4	BOLT
37	703332	1	WASHER
38	5025668FS	1	BOLT

Decal Group - Brand and Model

Note: Unless noted otherwise, use the standard torque specifications

Mfg. No: 5902133



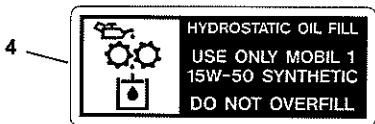
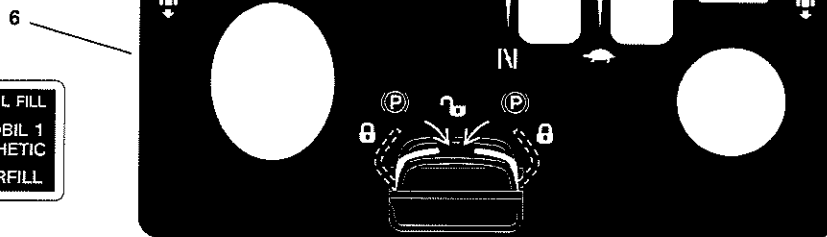
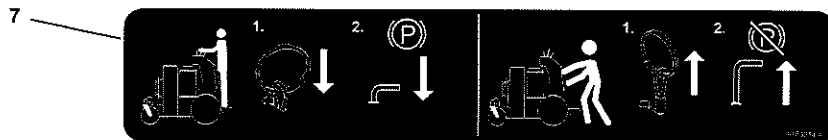
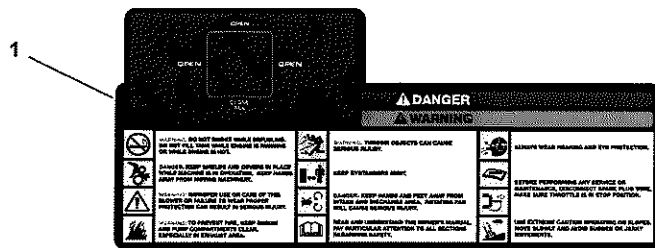
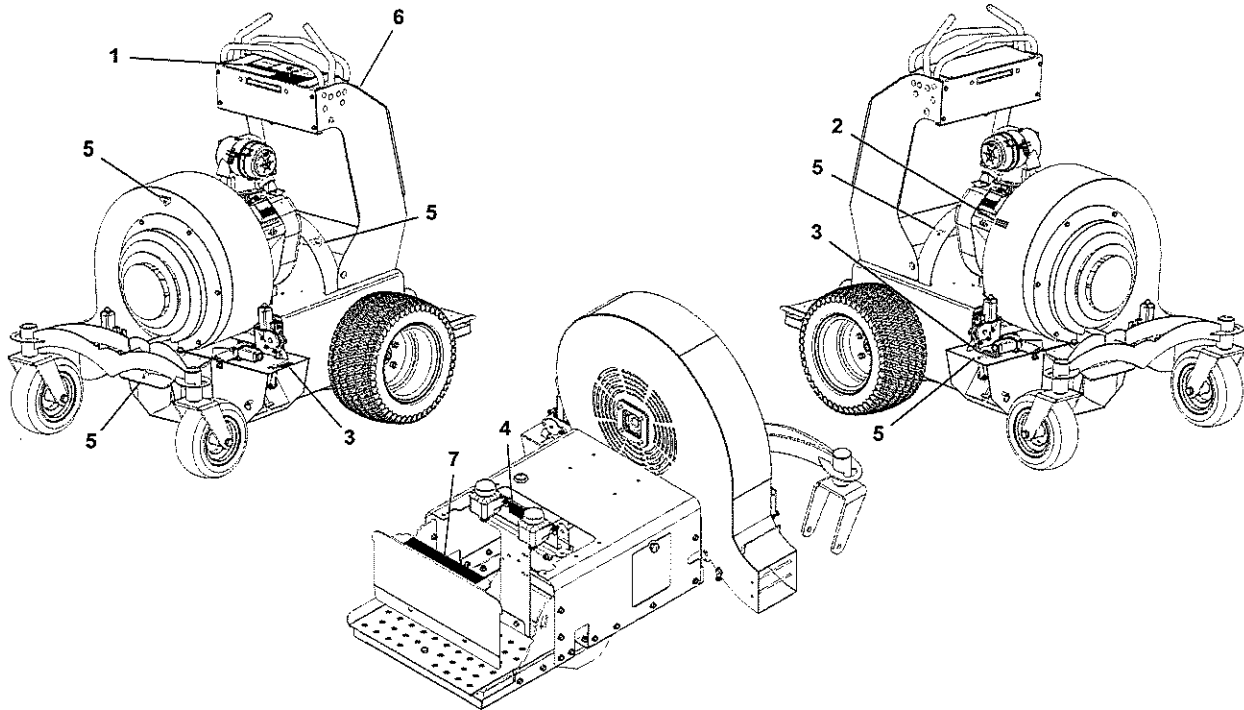
Decal Group - Brand and Model

REF NO	PART NO	QTY	DESCRIPTION
1	5111018	1	DECAL, Z3001 BADGE, BG
2	5111019	1	DECAL, Z3001 TOP PANEL, BG
3	5110335	1	DECAL, Z3000 HURRICANE_VERT, BG,LH
4	5110339	1	DECAL, Z3000 HURRICANE_VERT, RH
5	5110338	1	DECAL, Z3000 FRONT LOGO
6	5107557	2	LABEL, PRODUCT DECAL LG CIRCLE
7	80082701FS	2	DECAL, BRAND

Decal Group - Safety and Operation

Note: Unless noted otherwise, use the standard torque specifications

Mfg. No: 5902133



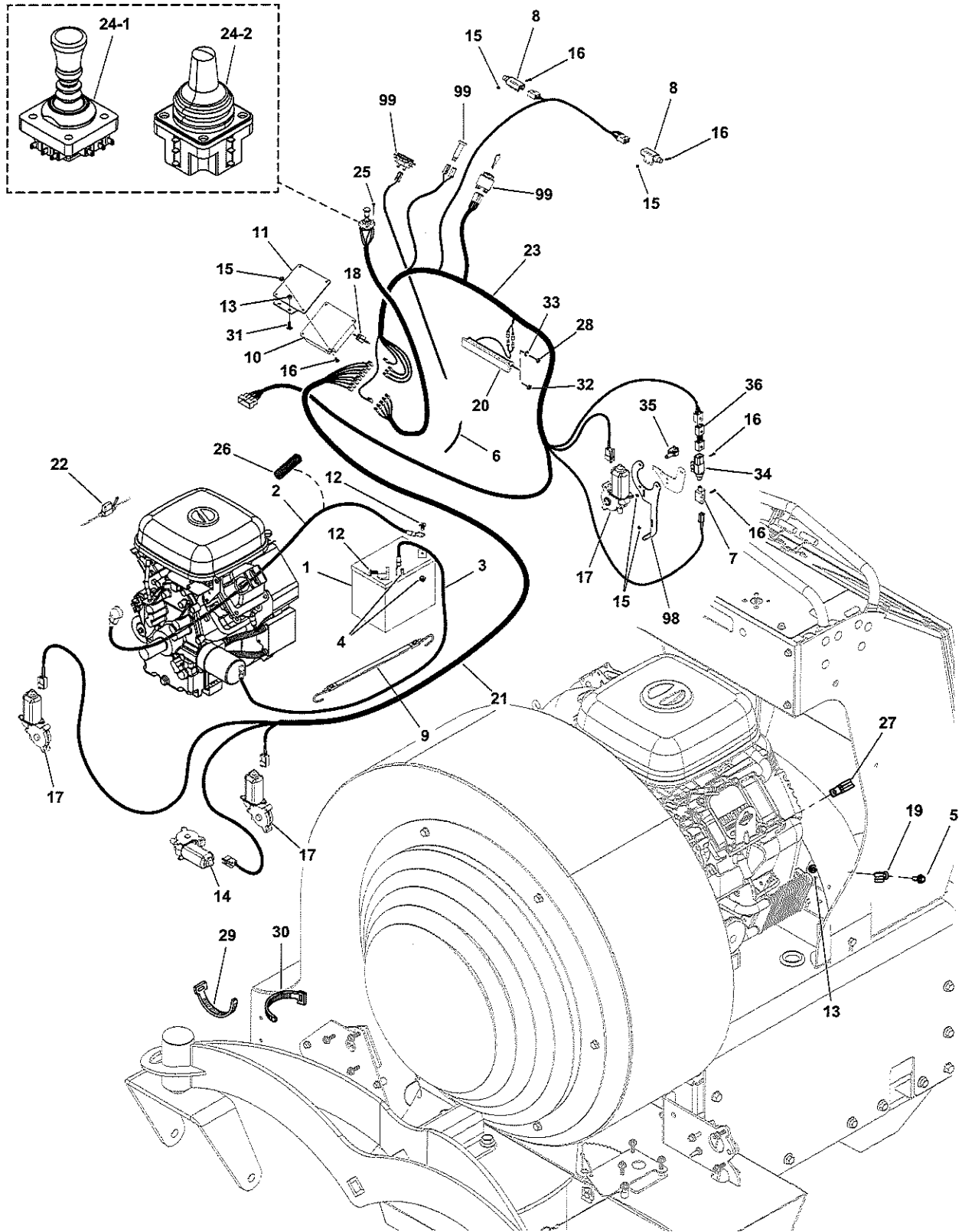
Decal Group - Safety and Operation

REF NO	PART NO	QTY	DESCRIPTION
1	5107509FS	1	DECAL, CONTROLS
2	5106771FS	1	DECAL, WARNING, HOT SURFACE
3	5106773FS	2	DECAL, Warning/Safety
4	5106774FS	1	DECAL
5	5106775FS	5	DECAL
6	84008754	1	DECAL, Controls
7	5109214FS	1	DECAL, BRAKE, PARK

Electrical Group S/N: 4002219159 and Above

Note: Unless noted otherwise, use the standard torque specifications

Mfg. No: 5902133



Electrical Group S/N: 4002219159 and Above

REF NO	PART NO	QTY	DESCRIPTION
1	---	1	BATTERY, 11U1L, 350 CCA -(BCIU1, 350 CCA)
2	5107244FS	1	CABLE, BATTERY, RED
3	5107245FS	1	CABLE, BATTERY, BLACK
4	5025127SM	2	NUT, 5/16-18 HEX SERR
5	5106872FS	2	BOLT
6	5107043FS	1	HARNESS, WIRING -(End without terminal is wrapped around spark plug wire and secure with wire tie.)
7	5021769SM	1	SWITCH, PLUNGER, N.C.
8	5106950FS	2	SWITCH
9	5106918FS	1	STRAP, Battery
10	5601264	1	KIT, RELAY, CONTROL MODULE -(Includes reference number #18).
11	5107407AAFS	1	MOUNT
12	5025145X6SM	2	BOLT, 5/16-18 X 3/4",
13	5025126FS	4	NUT
14	5106953FS	1	MOTOR
15	1928919SM	12	NUT-HEX & WASHER ASMY
16	5106875FS	12	SCREW (#10-32 X 3/4, ALLEN, SS)
17	5106952FS	3	DEFLECTOR, Motor
18	5107310FS	1	BREAKER, CIRCUIT, 15A
19	5107053	2	CLAMP, VINYL INSULATED, .50
20	84006903	1	HEADLIGHT ASSEMBLY
21	5107313FS	1	HARNESS, WIRING
22	5107311FS	1	HOLDER, FUSE
23	5107312FS	1	HARNESS, WIRING
24-1	5601265	1	KIT, JOYSTICK UPDATE -(S/N: 4001275566 and below)
24-2	5108766FS	1	KIT, Joystick -(S/N: 4001275567 and above)
25	5106875FS	4	SCREW (#10-32 X 3/4, ALLEN, SS)
26	5050927X17P5	1	WIRE LOOM, 3/8 ID X 17.5 IN
27	5107987FS	2	CLAMP
28	5025672	2	NUT, HEX, M5X.8MM, NYLON INSERT -(For headlights with 5MM studs)(Torque headlight mounting nut to 16-19 in-lbs.)
29	5021029SM	2	TIE, Cable 11" Long
30	5021030SM	8	TIE WRAP, 5-1/2" LONG
31	703575	2	BOLT, 1/4-20X.750, SQ
32	5025669	2	NUT, HEX, M6-1, NYLON INSERT -(For headlights with 6MM studs)
33	5025673	2	WASHER, 5MM, STAR, CZ -(For headlights with 5MM studs)
34	84008626	1	SWITCH, Sealed
35	5104736FS	1	CLIP
36	84008627	1	WIRE HARNESS, JUMPER, BRAKE SWITCH
98	---	0	Refer to: Parking Brake Group
99	---	0	Refer to: Instrument Control Panel Group

Electrical Schematic S/N: 4002219159 and Above

Note: Unless noted otherwise, use the standard torque specifications

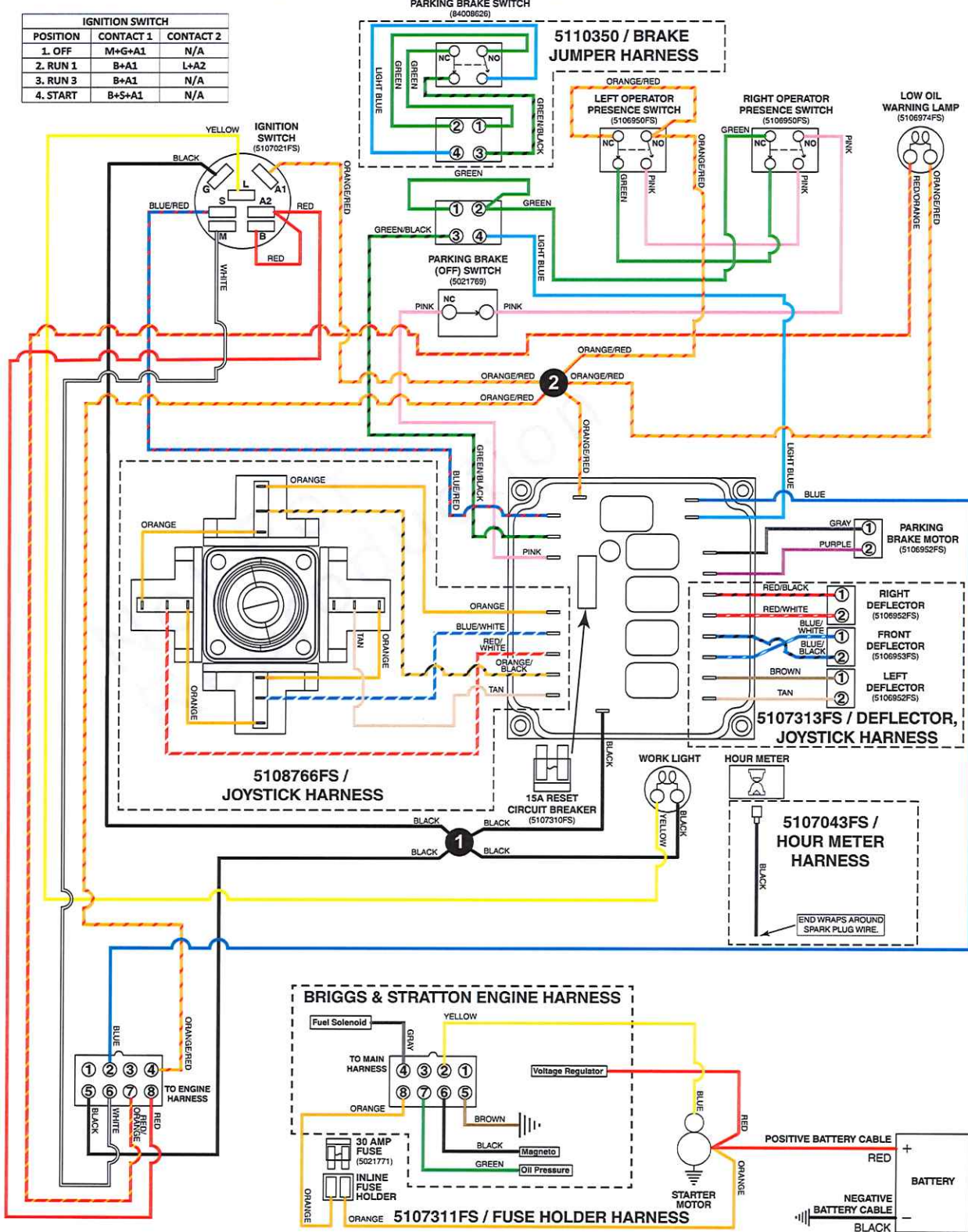
Mfg. No: 5902133

5107312FS / MAIN WIRE HARNESS - BRIGGS & STRATTON 613477 ENGINES

5107312B

(If internal schematic of the switch is not shown, the image of the switch represents the back view of the connector as it is connected to the switch.)

IGNITION SWITCH		
POSITION	CONTACT 1	CONTACT 2
1. OFF	M+G+A1	N/A
2. RUN 1	B+A1	L+A2
3. RUN 3	B+A1	N/A
4. START	B+S+A1	N/A



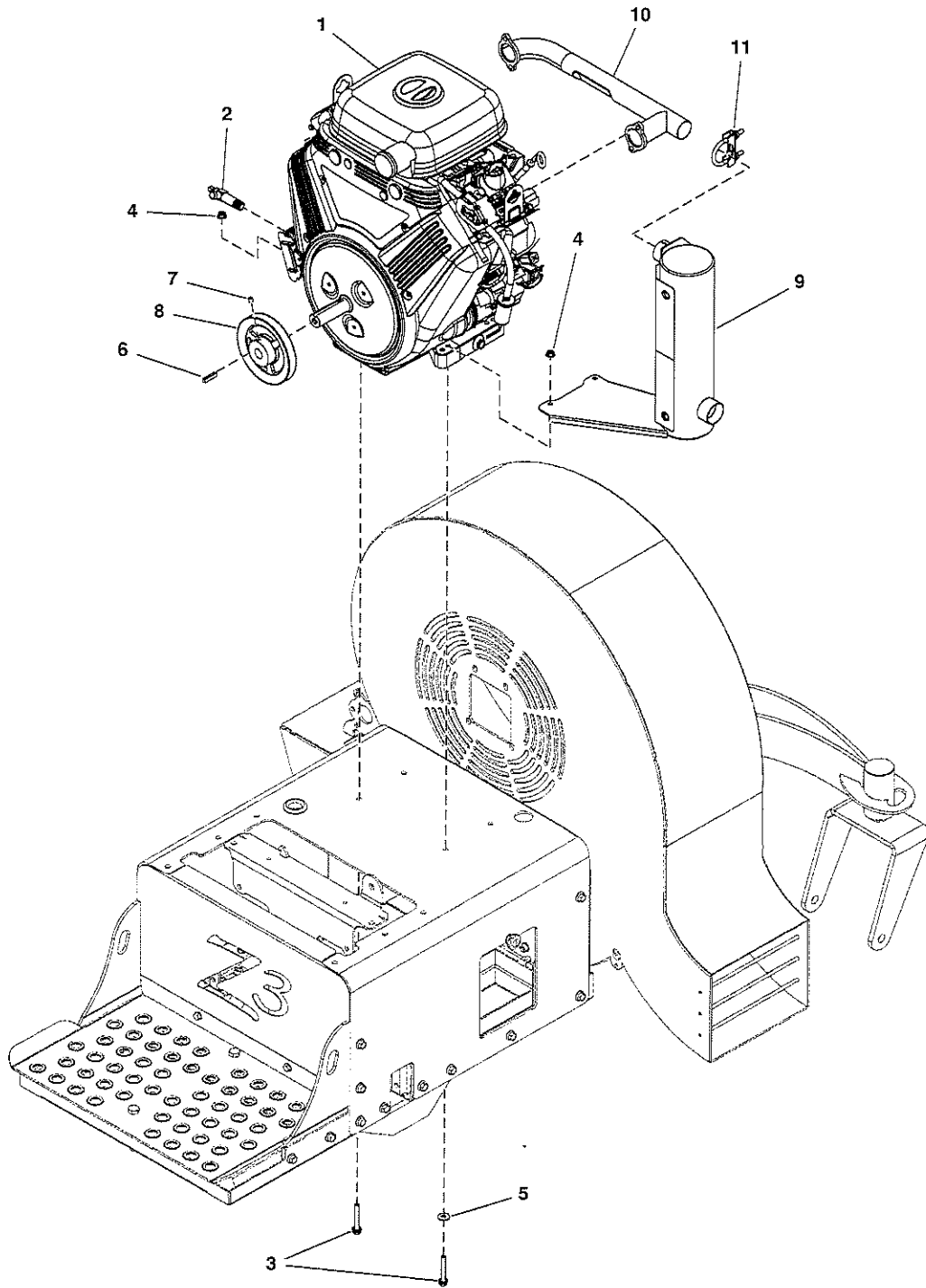
Electrical Schematic S/N: 4002219159 and Above

REF NO	PART NO	QTY	DESCRIPTION
5107312FS	5107312FS	1	HARNESS, WIRING
5108766FS	5108766FS	1	KIT, Joystick
5107313FS	5107313FS	1	HARNESS, WIRING
5107043FS	5107043FS	1	HARNESS, WIRING
5110350	84008627	1	WIRE HARNESS, JUMPER, BRAKE SWITCH
5107311FS	5107311FS	1	HOLDER, FUSE

Engine Group

Note: Unless noted otherwise, use the standard torque specifications

Mfg. No: 5902133



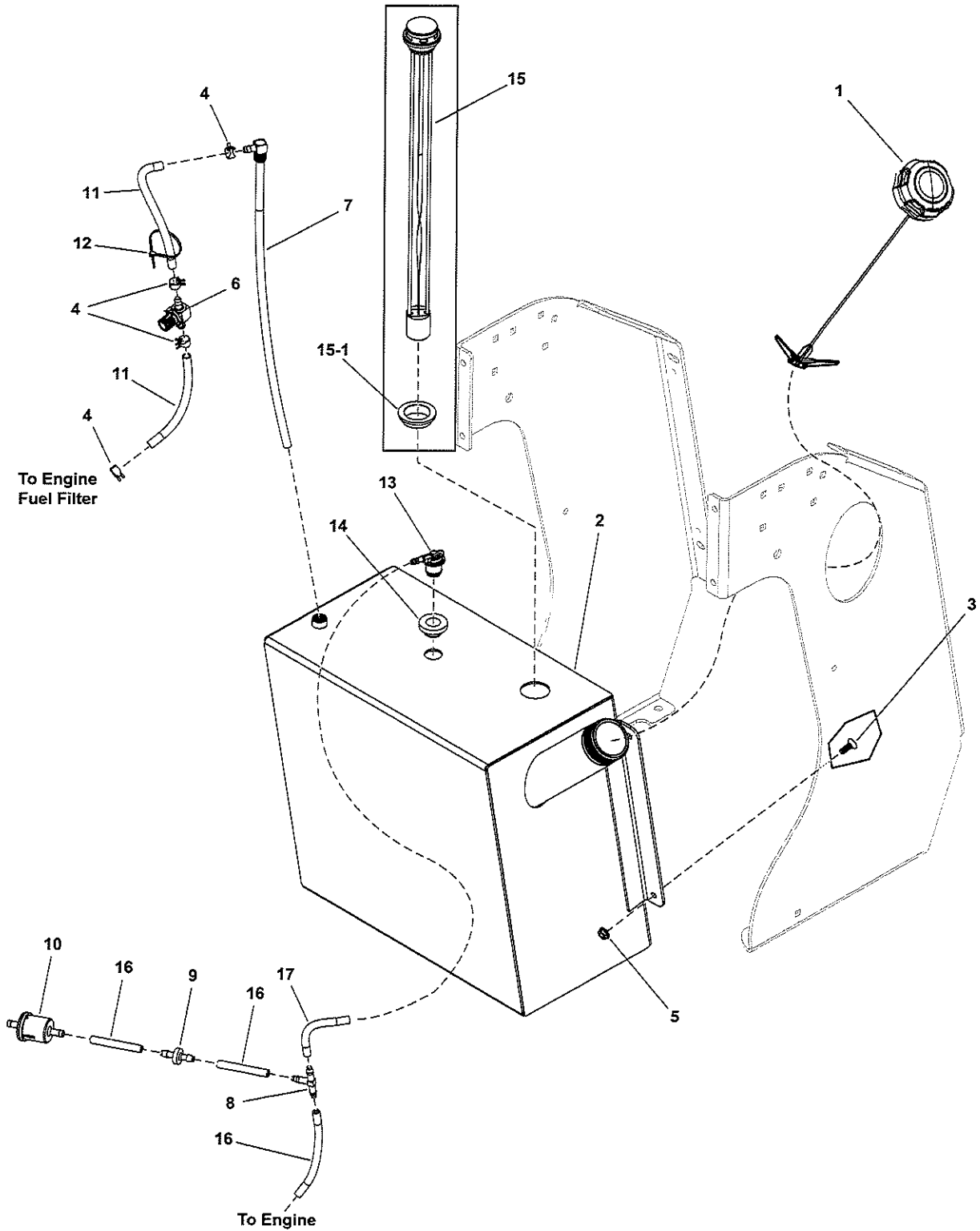
Engine Group

REF NO	PART NO	QTY	DESCRIPTION
1	----	1	ENGINE, VANGUARD, 993cc
2	5107284FS	1	VALVE, OIL DRAIN SHUT OFF
3	5107304FS	4	BOLT
4	5025127SM	4	NUT, 5/16-18 HEX SERR
5	5107147	1	WASHER, 5/16 FLAT, CZ
6	5050407X10YP	1	KEY, 1/4 SQ X 1-1/4
7	1677029SM	2	SCREW, Set, Hex Socket Head, Cup Point, 5/16-18 x 3/8
8	5107285FS	1	PULLEY
9	5109327FS	1	MUFFLER
10	5109328FS	1	MANIFOLD
11	5107305FS	1	CLAMP, Muffler

Fuel Tank and Hose Group

Note: Unless noted otherwise, use the standard torque specifications

Mfg. No: 5902133



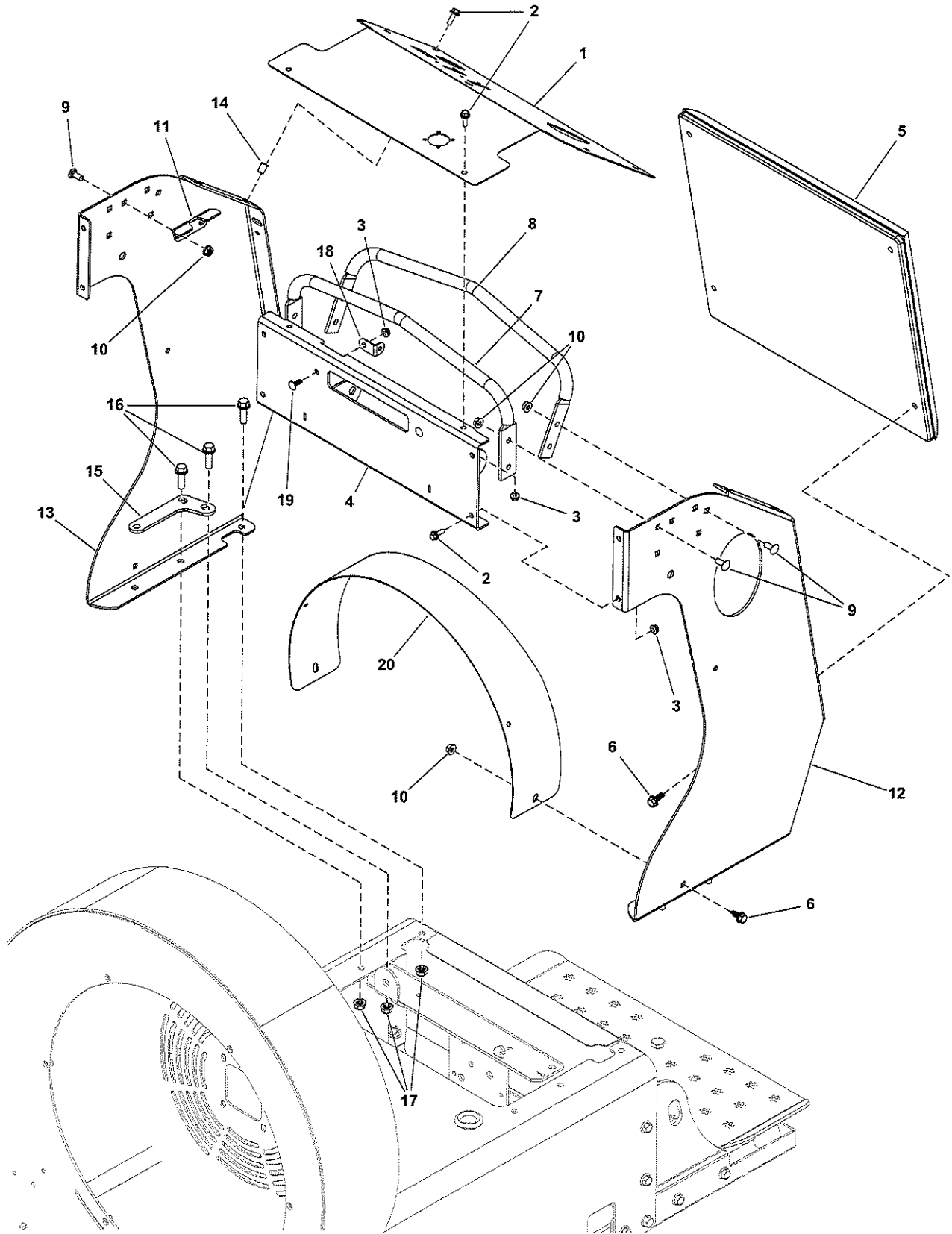
Fuel Tank and Hose Group

REF NO	PART NO	QTY	DESCRIPTION
1	84008753	1	CAP, Fuel Tank
2	84008756	1	TANK, Fuel
3	5106863FS	4	SCREW
4	691038	4	CLAMP, Hose
5	5025126FS	4	NUT
6	5107072FS	1	VALVE, Fuel Shut Off
7	5107073FS	1	EXTENSION, FUEL TRANSFER TUBE
8	5106956FS	1	FITTING
9	5106955FS	1	VALVE, Check
10	84001895	1	FILTER, Fuel
11	5050831X6YP	2	HOSE, 1/4" FUEL, 6.00
12	5021030SM	1	TIE WRAP, 5-1/2" LONG
13	770046	1	REMOTE VENT ASSEMBLY
14	799624	1	GROMMET
15	84008752	1	GAUGE, Fuel -(includes item # 15-1).
15-1	5105477X1	1	RUBBER SEAL
16	7700552X2P5FS	3	HOSE, VAPOR
17	7700552X14FS	1	HOSE, Vapor -(Cut to length)

Handle Bar Group

Note: Unless noted otherwise, use the standard torque specifications

Mfg. No: 5902133



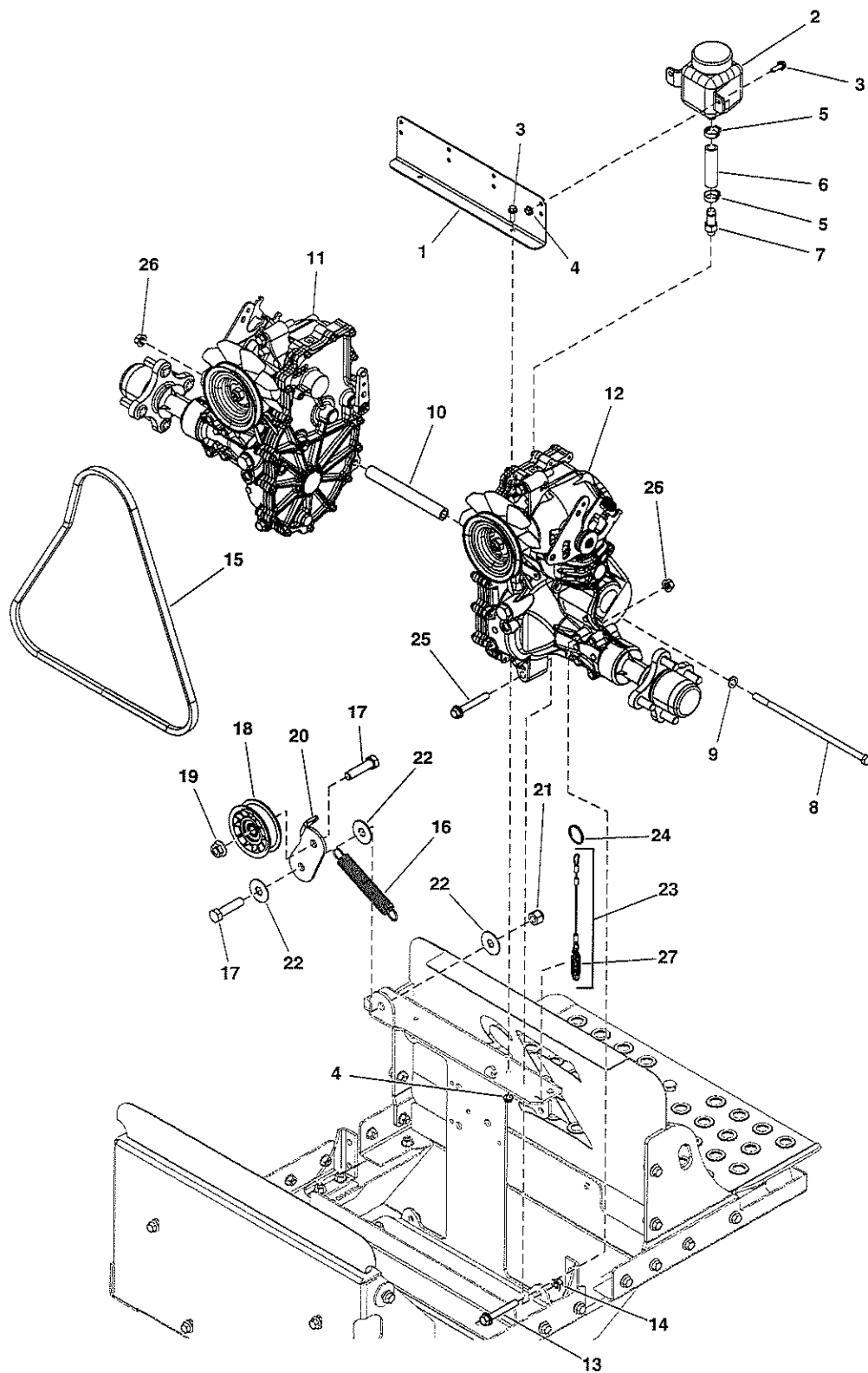
Handle Bar Group

REF NO	PART NO	QTY	DESCRIPTION
1	84008755	1	PLATE, Control Panel
2	5106872FS	10	BOLT
3	5025126FS	10	NUT
4	---	1	WELD, DASH FRONT PANEL - ORG
5	5107538FS	1	PAD, KNEE
6	703354	6	SCREW, 5/16-18
7	5107044AFS	1	HANDLE, FRONT
8	5107045AFS	1	HANDLE, REAR
9	5025145X6SM	12	BOLT, 5/16-18 X 3/4",
10	5025127SM	14	NUT, 5/16-18 HEX SERR
11	5107391FS	2	BRACKET
12	5423356AD	1	CONTROL TOWER Z3000, LH - TX ORG
13	5418578AD	1	CONTROL TOWER Z3, RH - ORG
14	5106833FS	4	NUT
15	5107544AFS	2	PLATE
16	5025390X8FS	8	BOLT
17	5025666FS	8	NUT
18	84007036	2	BRACKET, L Headlight Mount
19	703575	2	BOLT, 1/4-20X.750, SQ
20	5423464AD	1	PLATE, BELT GUARD COVER, Z3000-TX ORG

Hydraulic Group

Note: Unless noted otherwise, use the standard torque specifications

Mfg. No: 5902133



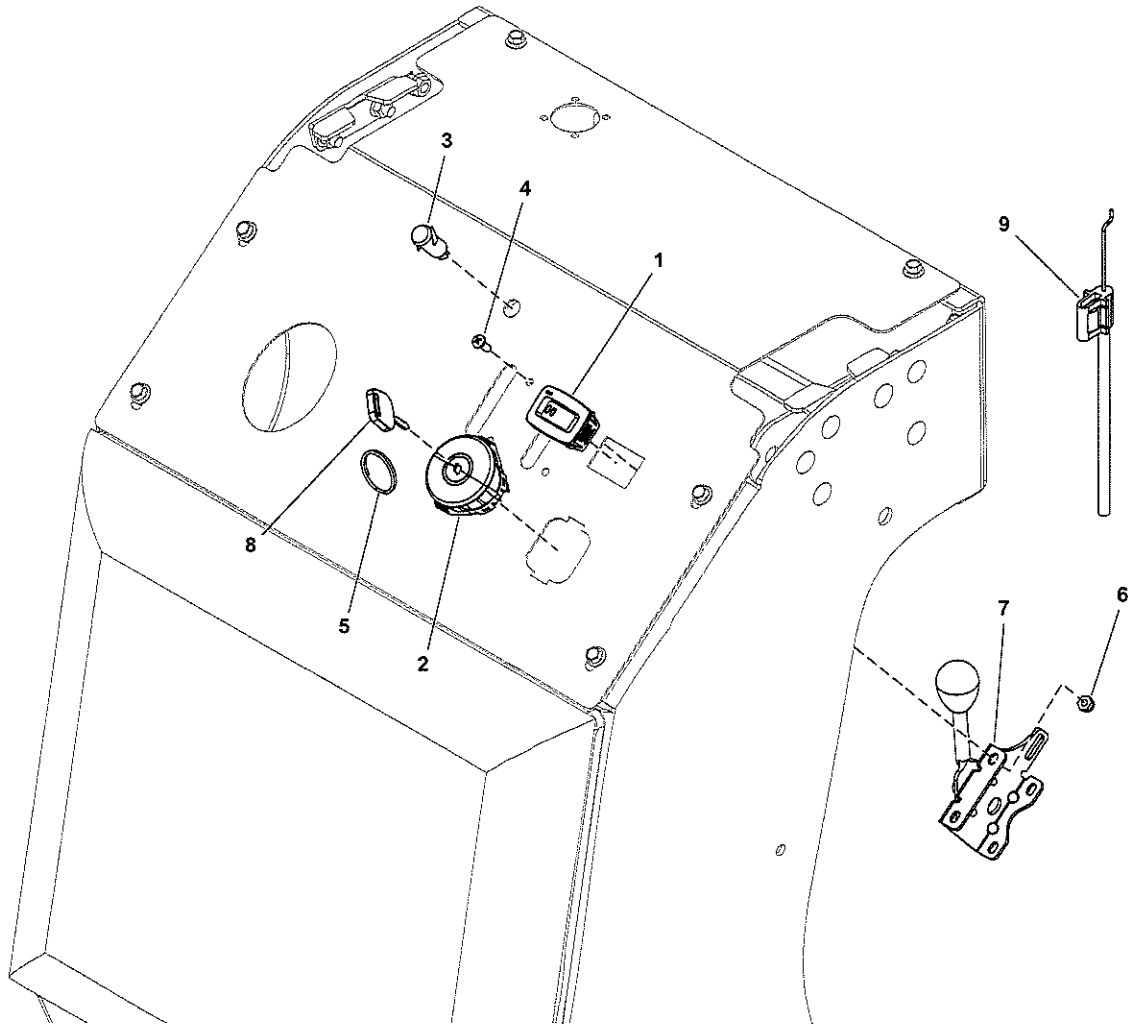
Hydraulic Group

REF NO	PART NO	QTY	DESCRIPTION
1	5107366AAFS	1	MOUNT, TANK
2	5100473SM	2	RESERVOIR
3	5106872FS	6	BOLT
4	5025126FS	6	NUT
5	5025474SM	4	CLAMP - HOSE
6	5050857X2P75FS	2	HOSE
7	5107224FS	2	FITTING
8	5025667FS	1	BOLT
9	5025156FS	1	WASHER
10	5107370FS	1	SPACER
11	5107227	1	TRANSAXLE, ZT3100, RH, ZJ-LPRP-3A7C-19XX -(S/N: 40015467047 and below)
11	84006961	1	TRANSAXLE -(S/N: 40015467048 and above)
12	5107222	1	TRANSAXLE, ZT3100, LH, ZJ-HPRP-3A7B-19XX -(S/N: 40015467047 and below)
12	84006962	1	TRANSAXLE -(S/N: 40015467048 and above)
13	5025670	4	BOLT, HEX, 3/8-16 X 3", SER FLG GRD5, CZ
14	5025666FS	4	NUT
15	5106821FS	1	BELT, DRIVE
16	5106923FS	1	SPRING
17	5025017X16YP	2	BOLT, 1/2-13 X 2 GD5
18	5107103FS	1	PULLEY, IDLER
19	770225	1	NUT
20	5107365AAFS	1	ARM, IDLER
21	5025056FS	1	NUT
22	5107348FS	3	WASHER
23	5107300FS	2	CABLE, Hydraulic Control -(Includes item # 28.)
24	5108012FS	2	KEY
25	5106859FS	4	BOLT
26	5025394SM	5	NUT, 3/8-16 HEX NYLOCK
27	5106888FS	2	SPRING, EXTENSION

Instrument Control Panel Group

Note: Unless noted otherwise, use the standard torque specifications

Mfg. No: 5902133



Instrument Control Panel Group

REF NO	PART NO	QTY	DESCRIPTION
1	5106789FS	1	METER, HOUR
2	5107021FS	1	SWITCH, Ignition
3	5106974FS	1	LIGHT, INDICATOR
4	5025179X4SM	4	SCREW, #10-24 X 1/2" ROUND PHILLIPS
5	5108012FS	1	KEY
6	5025271FS	4	NUT
7	5107399FS	2	LEVER, THROTTLE CONTROL
8	1714054SM	2	KEY-IGNITIOM W/PLASTI
9	5101890	2	CABLE, THROTTLE, 31"

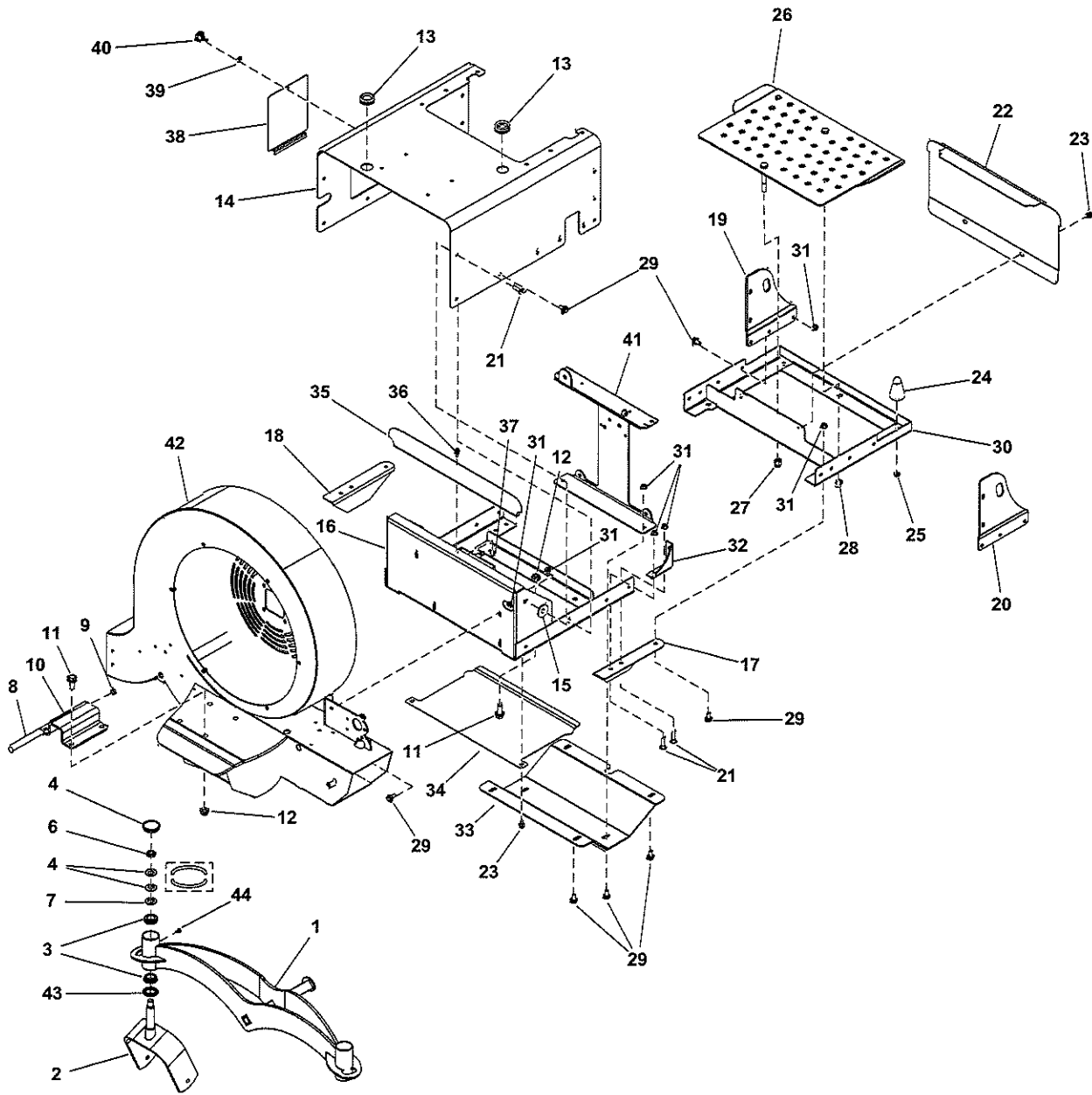
Footnotes:

(Key Ring for ignition keys)

Main Frame Group

Note: Unless noted otherwise, use the standard torque specifications

Mfg. No: 5902133



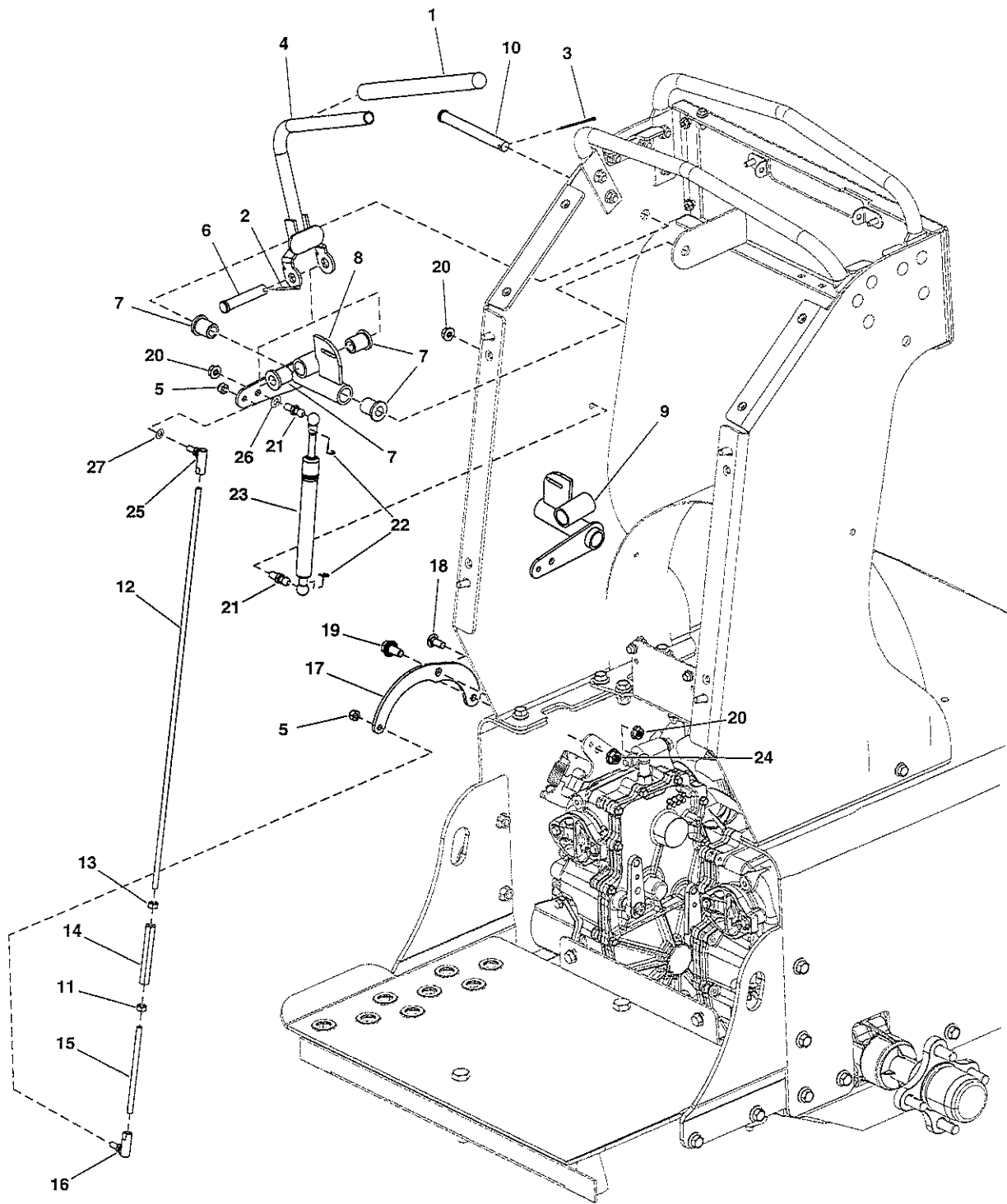
Main Frame Group

REF NO	PART NO	QTY	DESCRIPTION
1	5423389A	1	WELD, FRONT END FRAME, Z3000 - BLK
2	84008188	2	YOKE, Caster
3	5020884SM	4	BEARING, TAPERED ROLL
4	5109845FS	2	CAP
5	5025449SM	4	WASHER, BELLEVILLE
6	5025448SM	2	NUT - 3/4-16 HEX JAM
7	5025160SM	2	WASHER, 3/4" SAE
8	5107356FS	4	CORD
9	---	2	RUBBER BAND -(Not a serviceable part.)
10	5419091ADFS	1	PLATE
11	5106786FS	6	BOLT
12	5106787FS	6	NUT
13	5106788FS	2	GROMMET, RUBBER
14	84008759	1	BOX, Motor
15	5107390FS	2	SPACER
16	5107547AFS	1	BOX, FRAME
17	5107383AFS	1	BRACKET
18	5107382AFS	1	BRACKET
19	---	1	PLATE, TIE DOWN RH - BLK
20	---	1	PLATE TIE DOWN LH - BLK
21	5025390X10FS	10	BOLT
22	5419301A	1	PLATE, TOE KICK, FB3000 - BLK
23	5106898FS	4	SCREW
24	5107206FS	4	BUMPER
25	5025127SM	4	NUT, 5/16-18 HEX SERR
26	5418525AFS	1	PLATFORM
27	5025056FS	1	NUT
28	5025646FS	1	NUT
29	5106881FS	28	BOLT
30	5107561AFS	1	BOX, FRAME
31	5025666FS	38	NUT
32	5107387AFS	2	SUPPORT, Transaxle
33	5107384AFS	1	PLATE
34	5107385AFS	1	GUARD
35	5107386AFS	1	GUARD
36	5106872FS	2	BOLT
37	5025126FS	2	NUT
38	5419192AFS	1	PLATE
39	5107350FS	1	WASHER
40	5106913FS	1	CAPSCREW
41	5418591AFS	1	TRANS, I-Beam
42	5418642AD	1	WELD, BLOWER HOUSING , Z3 - ORG
43	5021072SM	2	SEAL, GREASE
44	5025457SM	2	BOLT - 1/4-28 X 1/2

Motion Control Group

Note: Unless noted otherwise, use the standard torque specifications

Mfg. No: 5902133



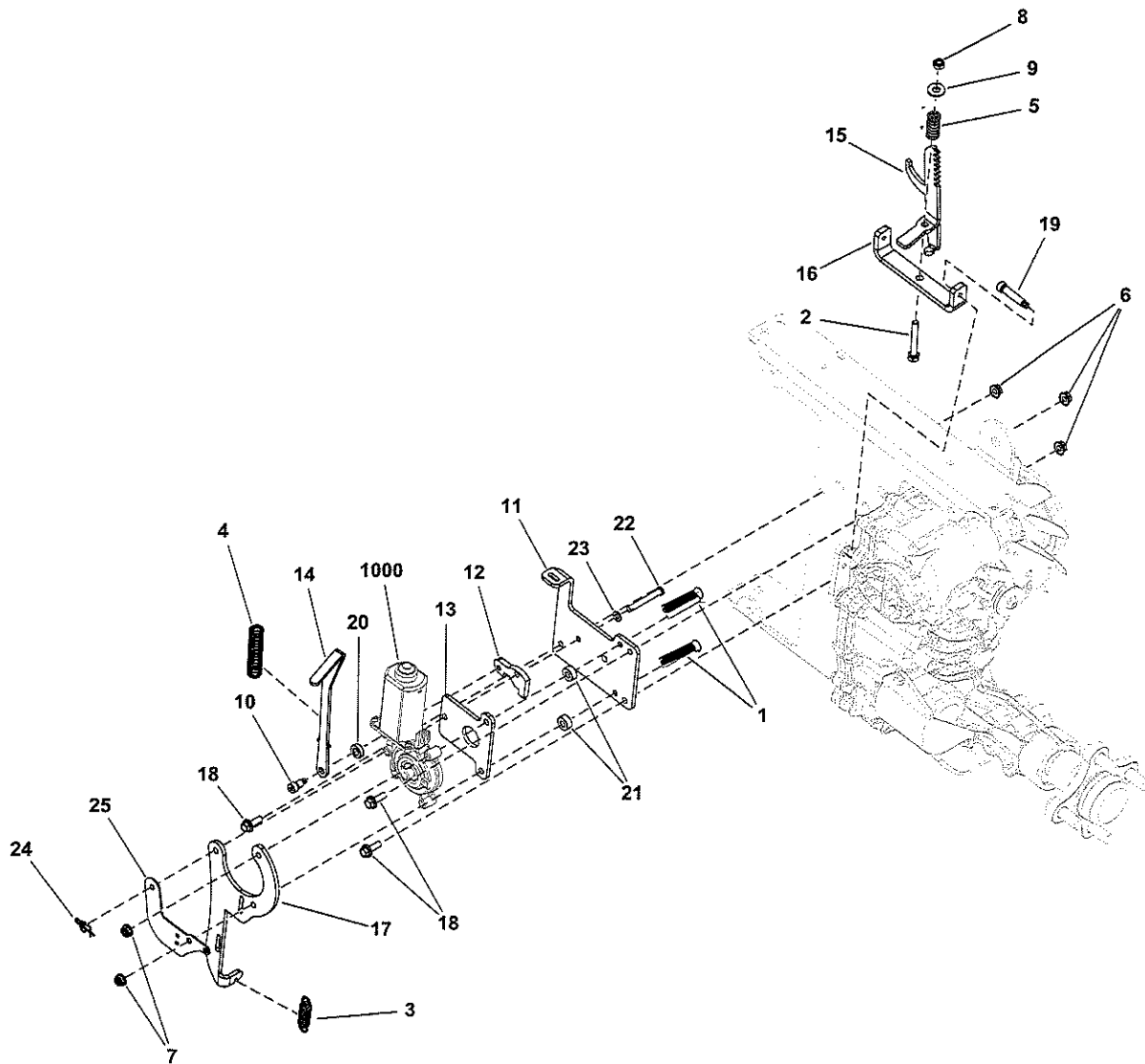
Motion Control Group

REF NO	PART NO	QTY	DESCRIPTION
1	5106940FS	2	GRIP
2	5025203X12	2	PIN, COTTER, 1/8 X 1 1/2, CZ
3	5107351FS	2	PIN, COTTER
4	5107368FS	2	CONTROL, HANDLE
5	5106892FS	4	NUT
6	5022044SM	2	PIN, CLEVIS, 1/2 X 2-
7	5106943FS	8	BUSHING
8	5107369FS	1	BRACKET, Control
9	5107367FS	1	BRACKET
10	5025456FS	2	PIN, CLEVIS
11	7090095FS	2	NUT, 1/4
12	5107108FS	2	ROD
13	5106858FS	2	NUT
14	5106971FS	2	TUBE, CONNECTING
15	5107303FS	2	ROD
16	5106802FS	2	JOINT, BALL
17	5107241FS	2	ARM, CONTROL
18	5025145X6SM	2	BOLT, 5/16-18 X 3/4",
19	5106881FS	2	BOLT
20	5025127SM	6	NUT, 5/16-18 HEX SERR
21	5100941SM	4	BALL STUD
22	5106969FS	4	CLIP
23	5107193FS	2	DAMPENER
24	5025666FS	2	NUT
25	5106803FS	2	JOINT, BALL
26	703350	2	WASHER
27	703332	2	WASHER

Parking Brake Group S/N: 4002219159 and above

Note: Unless noted otherwise, use the standard torque specifications

Mfg. No: 5902133



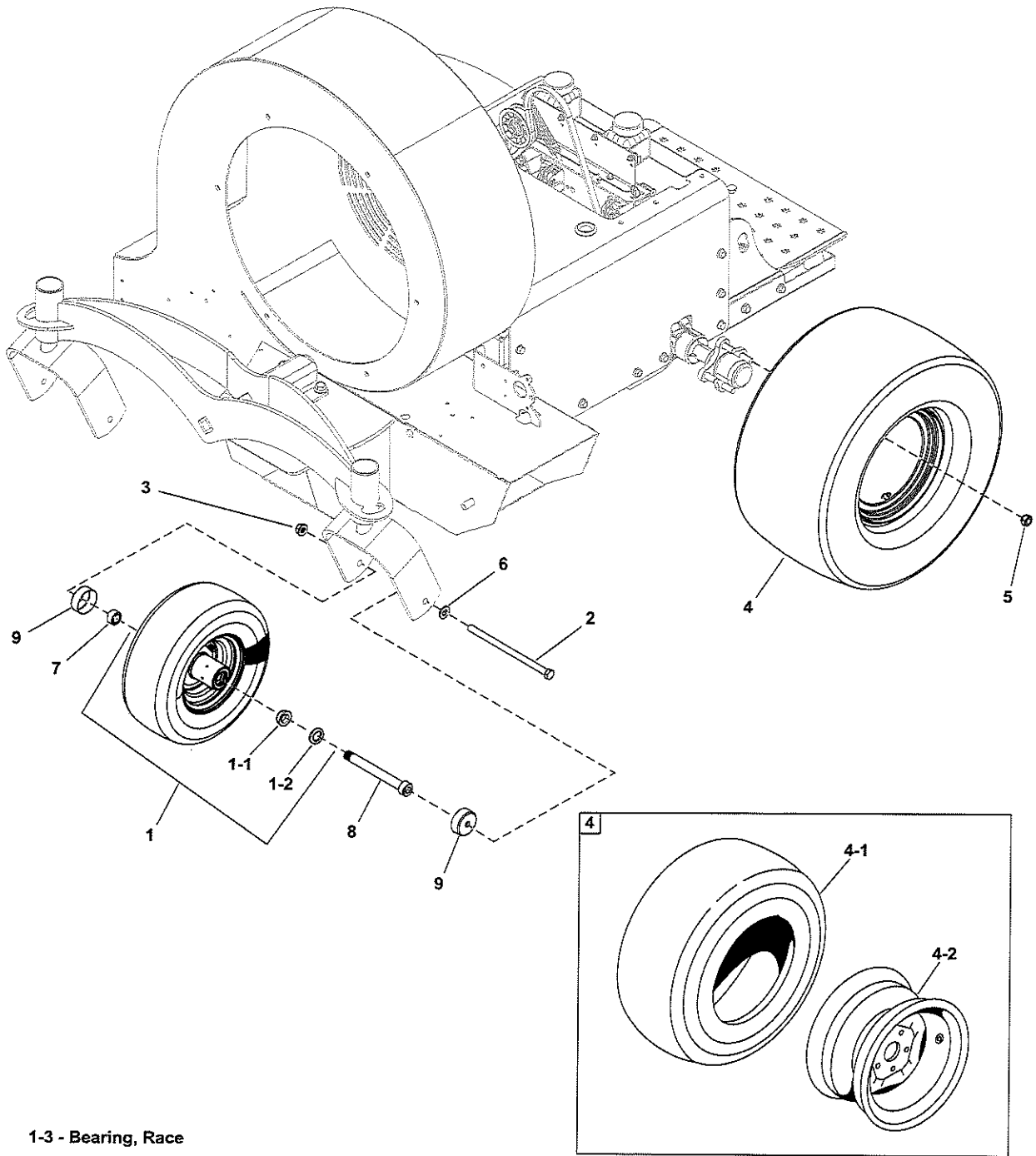
Parking Brake Group S/N: 4002219159 and above

REF NO	PART NO	QTY	DESCRIPTION
1	5106908FS	2	SCREW
2	5025010X16FS	1	BOLT
3	5106888FS	1	SPRING, EXTENSION
4	5106910FS	1	SPRING, Compression
5	5106911FS	1	SPRING, COMPRESSION
6	5025126FS	3	NUT
7	5025391FS	2	NUT
8	5025095SM	1	NUT, 1/4-20 HEX NYLON
9	5106815FS	1	WASHER
10	5106912FS	1	BOLT
11	5107321FS	1	PLATE
12	5107322FS	1	PLATE
13	5107324FS	1	PLATE
14	5107328FS	1	PLATE
15	5107325FS	1	BRACKET, BRAKE
16	5110201FS	1	ARM, Lever
17	5107327FS	1	PLATE, SWITCH
18	5106872FS	3	BOLT
19	5106941FS	2	BOLT
20	84008621	1	SPACER
21	84008622	2	SPACER
22	84008623	1	PIN, Clevis
23	84008624	1	WASHER, Flat
24	703355	1	COTTER PIN, 3/8
25	84008625	1	PLATE, Switch
1000	---	0	Refer to: Electrical Group

Wheel and Tire Group

Note: Unless noted otherwise, use the standard torque specifications

Mfg. No: 5902133



1-3 - Bearing, Race

Wheel and Tire Group

REF NO	PART NO	QTY	DESCRIPTION
1	5023279YP	2	TIRE ASSM, 13X6.50-6
1-1	5022631SX2	2	BEARING, Tapered Roller -(SV - 2 per tire)
1-2	5022631SX3	2	SEAL, GREASE -(SV - 2 per tire)
1-3	5022631SX4	2	BEARING, RACE -(SV - 2 per tire)
2	5025017X72YP	2	BOLT, 1/2-13 X 9 GD5
3	770225	2	NUT
4	5107875FS	2	TIRE ASSEMBLY
4-1	5107875X1	2	TIRE, 22-11.00 X 10, 4-PLY (TIRE ONLY) -(One per tire)
4-2	---	2	WHEEL RIM -(Not available for sale. Refer to Complete Tire Assembly)
5	5020601SM	8	NUT, 1/2-20, FOR WHEEL BOLT-SILVER
6	5025158SM	2	WASHER, 1/2" SAE
7	5103650YP	2	NUT, BEARING
8	5103649YP	2	BEARING ADJUSTER
9	5103594YP	4	DEBRIS, COVER, WHEEL