



INSTRUCTION SHEET 07050

Part #: 9216, 9217, 9211,
9228, 9229, & 9230
Description: Mulching Plates
Date: February 24, 2000

Mulching Plate 9216

Fits all 32", 36" & 52" Decks.

Also fits 48" Decks with serial number over 30000.

IMPORTANT: If you are installing the mulching plate to a SM-61A, SMT-61A or SMT-52A, please see the instructions on page 4. If you are installing a mulching plate on an STC (Tiger Cub) machine, reference page 5 for installation instructions.

1. Prepare the machine so there is easy and safe access to the work area. Remove the key and disconnect the spark plug wires. Maintain all safety related work procedures. Always wear hand and eye protection when working near cutter blades.
2. **On 36", 48" & 52" decks:** Remove the lower bolt closest to the discharge chute securing the right hand caster support to the side of the cutter deck. (See Figure 5, Page 6).

On 32" decks: Remove both lower bolts securing the right hand caster support to the side of the cutter deck. Reinstall the bolt closest to the discharge chute so that the bolt head is on the inside of the deck and the threads face out. Secure with the hardware that you have just removed. (See Figure 4, Page 6).

On 52" SMTZ decks: Drill an 11/32" hole 8-1/2" from the discharge side of the deck and 2" down from the top of the deck. (See Figure 5, Page 6.)

3. Place the front end of the mulching plate inside the cutter deck discharge opening and align the hole in the mulching plate with the open hole in the deck.
4. Using one 5/16-18 x 1-1/4" bolt, secure the mulching plate to the cutter deck with one flat washer and one nut supplied in hardware package.

NOTE: Make sure that the front end of the mulching plate is bolted inside the cutter deck and comes out of the discharge opening (closing it off) and is flat against the outside of the deck.

5. Secure the back end of the mulching plate to the cutter deck using the remaining 5/16-18 x 1-1/4" bolt, two flat washers and lock nut supplied in the hardware package.

NOTE: On older cutter decks, an 11/32" hole may need to be drilled into the cutter deck to mount the mulching plate.

6. Protecting yourself from the sharp cutter blade, rotate the blade closest to the plate a full 180 degrees, making sure the blade tip does not hit the mulching plate.

NOTE: The original, standard cutting blades should be used with the mulching plate.

Part #: 9216, 9217, 9211,
9228, 9229, & 9230
Description: Mulching Plate

INSTRUCTION SHEET 07050

Mulching Plate 9217

Fits all 42" & 61" Decks.

Also fits 48" Decks with serial number UNDER 30000.

NOTE: If you are installing the mulching plate to a SM-61A, SMT-61A, SMST-61A or SMT-52A, please see the instructions on page 4. If you are installing a mulching plate on an STC (Tiger Cub) machine, reference page 5 for installation instructions.

1. Prepare the machine so there is easy and safe access to the work area. Remove the key and disconnect the spark plug wires. Maintain all safety related work procedures. Always wear hand and eye protection when working near cutter blades.
2. **On 61" deck:** Remove the lower bolt closest to the discharge chute securing the right hand caster support to the side of the cutter deck. (See Figure 3, Page 6).

On 61" SMZ and SMTZ decks: There will be a hole drilled in the front of the deck at the factory to install the front bolt of the mulching plate.

On 42" & 48" decks: Remove both lower bolts securing the right hand caster support to the side of the cutter deck. Reinstall the bolt closest to the discharge chute so that the bolt head is on the inside of the deck and the threads face out. Secure with the hardware that you have just removed. (See Figure 5 & 6, Page 6).

3. Place the front end of the mulching plate inside the cutter deck discharge opening and align the hole in the mulching plate with the open hole in the deck.
4. Using one 5/16-18 x 1-1/4" bolt, secure the mulching plate to the cutter deck with one flat washer and one nut supplied in hardware package.

NOTE: Make sure that the front end of the mulching plate is bolted inside the cutter deck and comes out of the discharge opening (closing it off) and is flat against the outside of the deck.

5. Secure the back end of the mulching plate to the cutter deck using the remaining 5/16-18 x 1-1/4" bolt, two flat washers and lock nut supplied in the hardware package.

NOTE: On older cutter decks, an 11/32" hole may need to be drilled into the cutter deck to mount the mulching plate.

6. Protecting yourself from the sharp cutter blade, rotate the blade closest to the plate a full 180 degrees, making sure the blade tip does not hit the mulching plate.

NOTE: The original standard cutting blades should be used with the mulching plate.

Part #: 9216, 9217, 9211,
9228, 9229, & 9230
Description: Mulching Plate

INSTRUCTION SHEET 07050

Mulching Plate 9211

Fits all 72" Decks.

NOTE: If you are installing the mulching plate to a SMST-72A, please see the instructions on page 4.

1. Prepare the machine so there is easy and safe access to the work area. Remove the key and disconnect the spark plug wires. Maintain all safety related work procedures. Always wear hand and eye protection when working near cutter blades.
2. **On 72" deck:** Remove the lower bolt closest to the discharge chute securing the right hand caster support to the side of the cutter deck. (See Figure 3, Page 6).

On 72" Magnum III decks: There is an existing hole in the front of the deck to secure the front of the mulching plate.

3. Place the front end of the mulching plate inside the cutter deck discharge opening and align the hole in the mulching plate with the open hole in the deck.
4. Using one 5/16-18 x 1-1/4" bolt, secure the mulching plate to the cutter deck with one flat washer and one nut supplied in hardware package.

NOTE: Make sure that the front end of the mulching plate is bolted inside the cutter deck and comes out of the discharge opening (closing it off) and is flat against the outside of the deck.

5. Secure the back end of the mulching plate to the cutter deck using the remaining 5/16-18 x 1-1/4" bolt, two flat washers and lock nut supplied in the hardware package.

NOTE: On older cutter decks, an 11/32" hole may need to be drilled into the cutter deck to mount the mulching plate.

6. Protecting yourself from the sharp cutter blade, rotate the blade closest to the plate a full 180 degrees, making sure the blade tip does not hit the mulching plate.

NOTE: The original standard cutting blades should be used with the mulching plate.

Part #: 9216, 9217, 9211,
9228, 9229, & 9230
Description: Mulching Plate

INSTRUCTION SHEET 07050

Installing the Mulching Plate to the SM-61A, SMT-52A, SMT-61A, SMST-61A, SMST-72A

1. Prepare the machine so there is easy and safe access to the work area. Remove the key and disconnect the spark plug wires. Maintain all safety related work procedures. Always wear hand and eye protection when working near cutter blades.
2. Secure the 5/16-18 eyebolt to the mulching plate using the 5/16-18 X 1-1/4" bolt, two flat washers and the elastic stop nut supplied in the hardware package. (See Figure 1).
3. Place the front end of the mulching plate inside the cutter deck discharge opening and insert the end of the eyebolt into the open hole in the top of the cutter deck (See Figure 1). Loosely secure using one flat washer and one 5/16-18 elastic stop nut. Do not tighten the elastic stop nut at this time.

NOTE: Make sure that the front end of the mulching plate is bolted inside the cutter deck and comes out of the discharge opening (closing it off) and is flat against the outside of the deck.

4. Be sure the top of the mulching plate is tight against the top of the cutter deck and secure the back end of the mulching plate to the cutter deck using the remaining 5/16-18 x 1-1/4" bolt, two flat washers and lock nut supplied in the hardware package. Tighten the elastic stop nut securing the front of the mulching plate.
5. Protecting yourself from the sharp cutter blades, rotate the blade closest to the plate a full 180 degrees, making sure the blade tip does not hit the mulching plate.

NOTE: The original standard cutting blades should be used with the mulching plate.

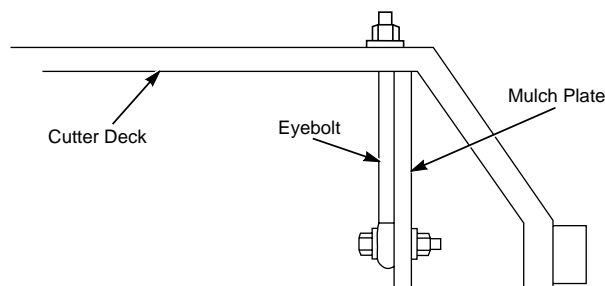


Figure 1. Mulching Plate Mounting

Part #: 9216, 9217, 9211,
9228, 9229, & 9230
Description: Mulching Plate

INSTRUCTION SHEET 07050

Mulching Plate 9228, 9229, & 9230 SMTC-40, 48, 48A, 52, and 52A Cutter Decks.

1. Prepare the machine so there is easy and safe access to the work area. Remove the key and disconnect the spark plug wires. Maintain all safety related work procedures. Always wear hand and eye protection when working near cutter blades.
2. Install the mulch plate and hardware using the illustration below for reference (See Figure 2).
3. Tighten all hardware securely.
4. Protecting yourself from the sharp cutter blades, rotate the blade closest to the plate a full 180 degrees, making sure the blade tip does not contact the mulching plate.

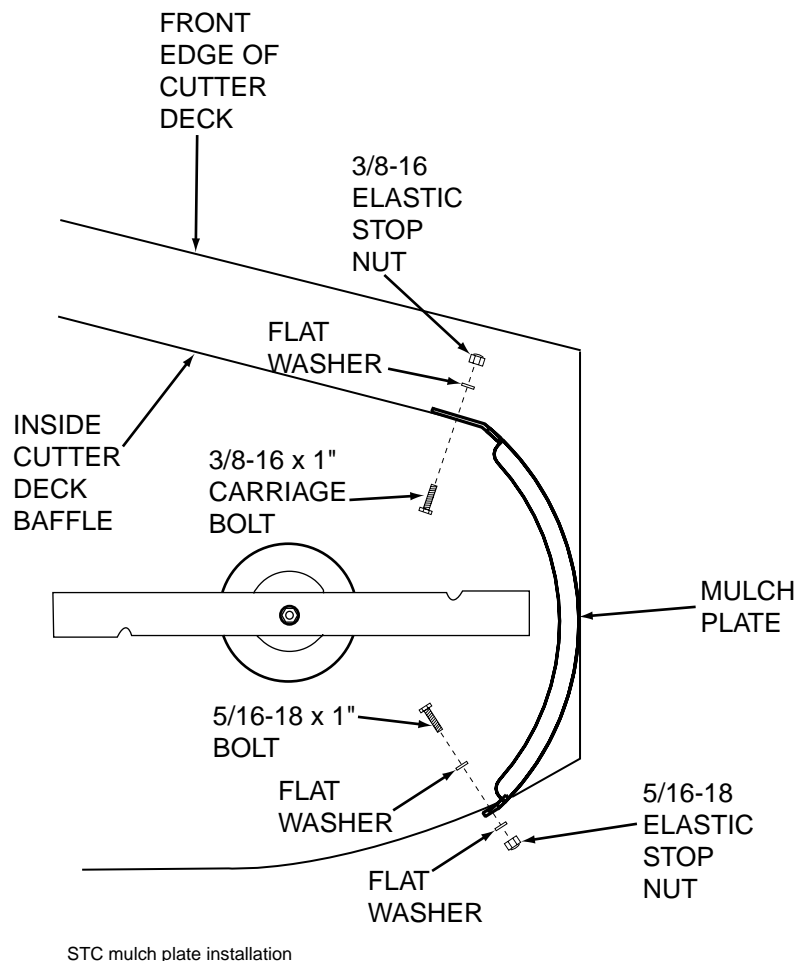


Figure 2. Mulching Plate Mounting for Tiger Cub Cutter Decks

Part #: 9216, 9217, 9211,
9228, 9229, & 9230
Description: Mulching Plate

INSTRUCTION SHEET 07050

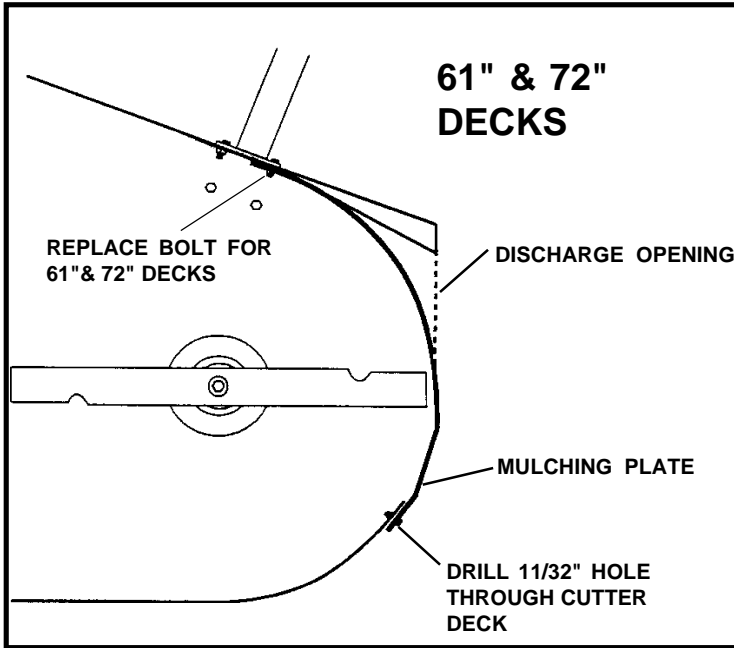


Figure 3

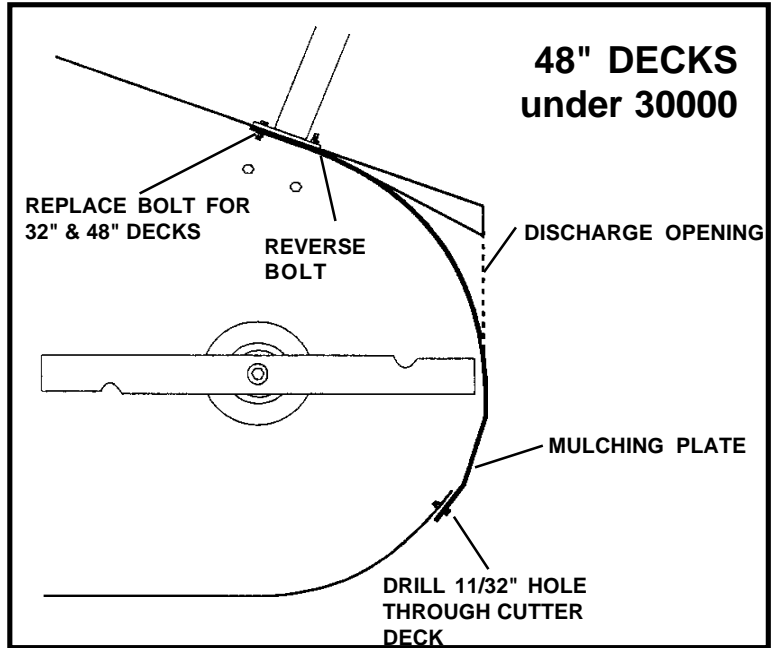


Figure 4

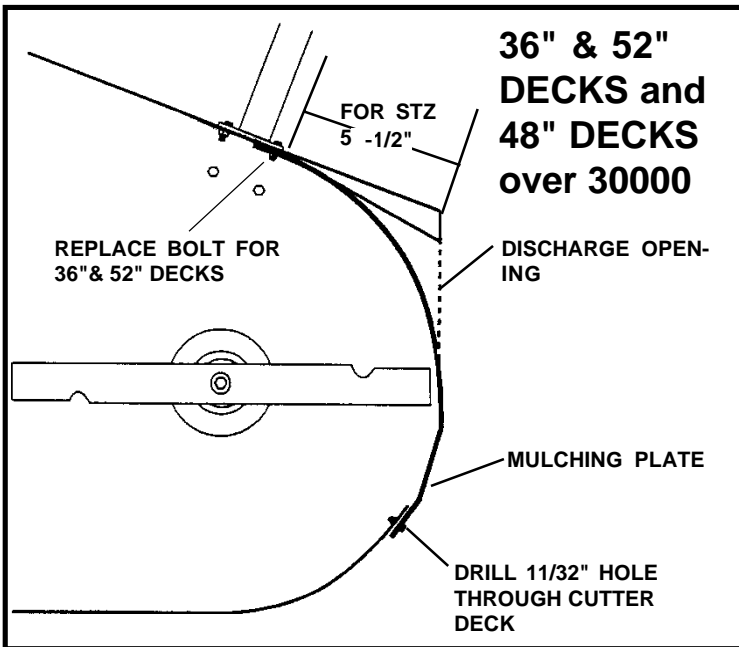


Figure 5

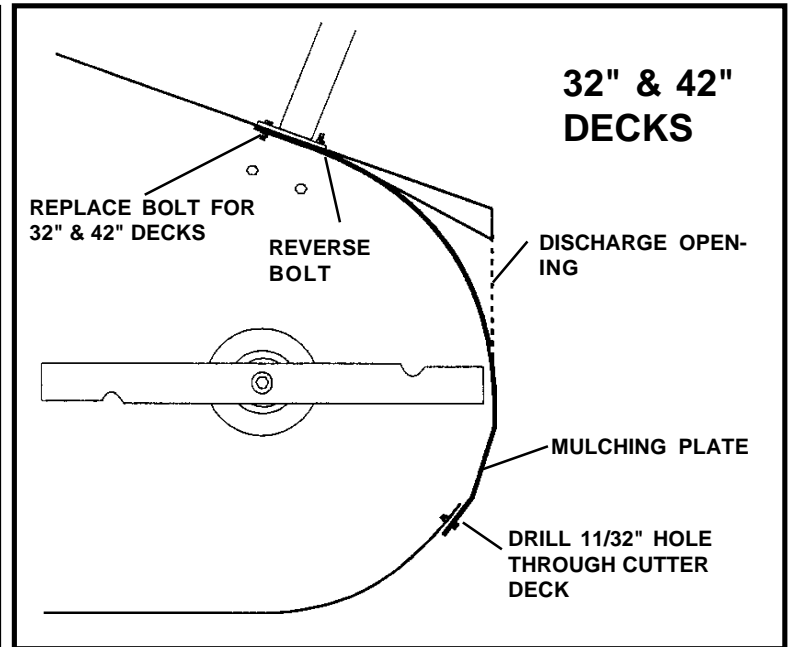


Figure 6